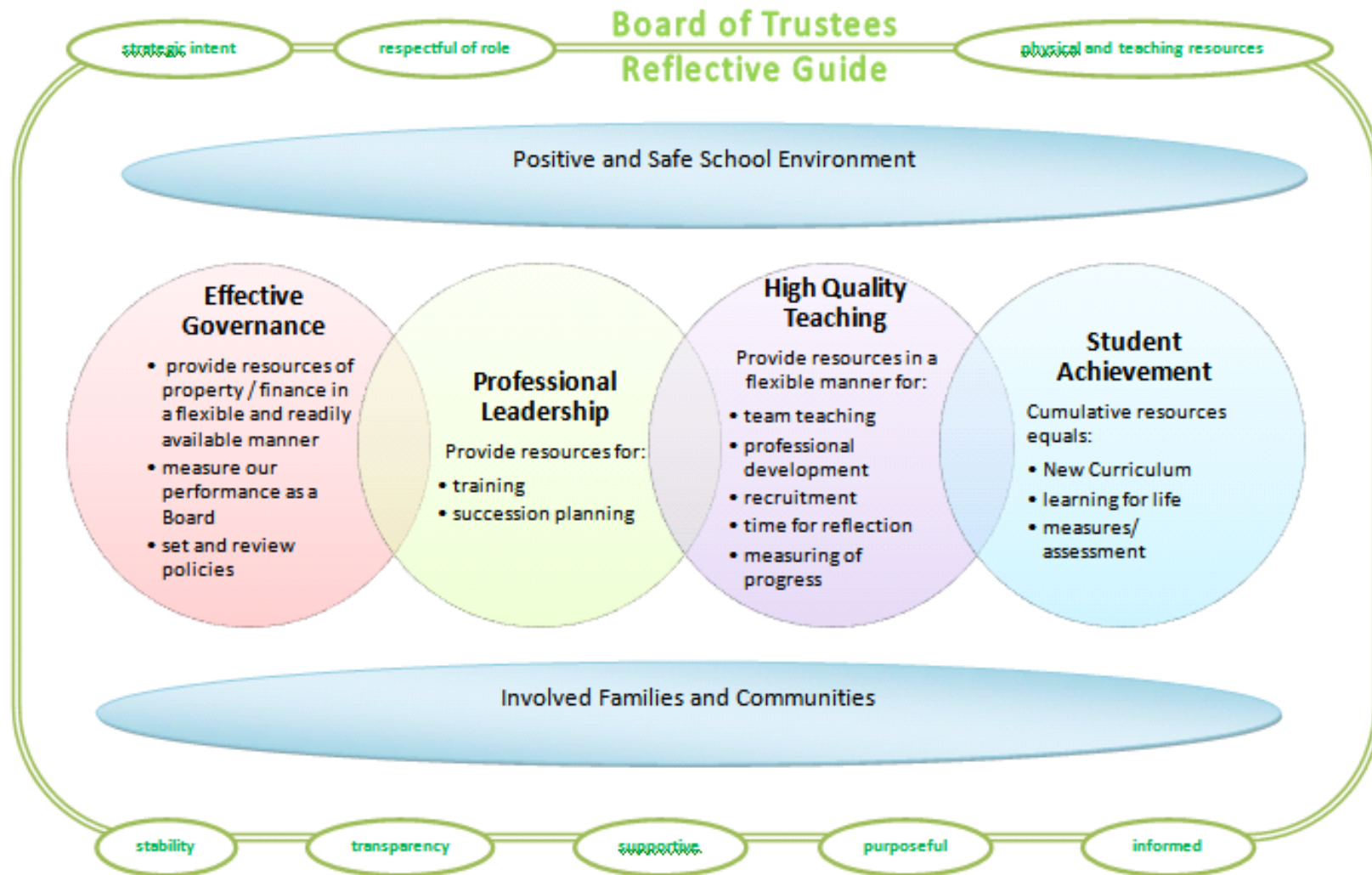


CBS STRATEGIC PLAN: 2010 - 2015



Based on the ERO Chain of Quality

NAG 1: STUDENT ACHIEVEMENT

5 Year Goal	Objective	Measure of Achievement	Date	Implementation
High expectations				
Students achieve in line/ above schools like us average and National Standards.	Set academic goals for reading, writing and mathematics each year, and report on achievement.	Performance against goals (December 2010) Performance against National Standards and report both results and progress.		
Grow well-balanced students	Provide programmes for students to grow socially, emotionally, in the domains of sport and the arts and as 'CBS Learners for Life.'	Number of students participating in social, sporting and cultural groups (in and outside the school)		Define what we want to know and refine the survey accordingly
Treaty of Waitangi				
Achieve bi-cultural awareness amongst the students	Provide opportunities at CBS for students to acquire some te reo Maori me ona tikanga.	Staff are aware of, and demonstrate good practice around the values for the Treaty of Waitangi and the bi-cultural nature of New Zealand.		
	Track the performance of Maori and Pacific Island students both academically and in relation to the principles of the CBS Curriculum	Performance of the students Communications to the families		

Cultural Diversity				
Embrace the cultural diversity of the school community	The Board will provide opportunities for international students to study at CBS in part to enhance cultural diversity at the school.	International students harmoniously work in the school environment.		
	There will be better utilisation of the cultural resources of the school to enhance the involvement in the school of ethnic groups with the school's parent/caregiver community.	Examples of involvement of non-European families in school life		
	Investigate how the Board could improve the ethnic diversity of the school at governance level.			
Inclusion				
All students feel a sense of worth and belonging	Provide as many opportunities as possible for students to participate in school activities that are age appropriate, and report on personal achievement	Student Interviews School reports include personal achievements		
Learning to learn				
Grow learners for life	Promote the CBS curriculum vision of "Growing Learners for Life" to the school's community.	Examples of communication		
	Measure and evaluate the progress towards growing	Student interviews Goals and evaluations of		

	learners for life as per the CBS Curriculum.	teacher's inquiry planning Reporting to the Board		
	Review the use of ICT across the school in order to develop a plan to ensure that there is a clear vision for the incorporation of the use of ICT at CBS to meet the CBS curriculum.	ICT plan developed and approved		
Community Engagement				
The school and community actively engage with one another	Review the ways the school obtains feedback from stakeholders on the performance of the school.	Service Quality Survey Focus groups Incidental feedback New entrant parent evenings Interviews with Maori and Pacific families SLEQ Investors in People (three yearly) ERO Investors in People		
	PTA and school provide opportunities for the parent community to participate in school events.	Examples of events		
	Devise a communication plan to ensure that parents/caregivers have the opportunity to be informed about how the school works to meet the needs of students in accordance with the CBS curriculum.	Communication plan		Invest in resources (or software) to analyse data and inform parents more frequently. Develop communication plan: Inform parents of inquiry

	Specifically, provide parents/caregivers with cohort and school-wide assessment information using measures such as national standards and asTTle. Also, provide parents with 'plain English' reporting on individual student achievement that includes levels of achievement in curriculum as well as personal achievement and citizenship commentary.	Delivery of revised reporting format Focus group feedback		learning approach. How student achievement is monitored. Examples of inquiry outcomes. Briefing sessions for parents.
Coherence				
Maximise teacher performance	Provide targeted professional development based on the Best Evidence Synthesis. Establish environment where teachers actively learn from each other. Teachers fully skilled in inquiry learning methods.	SLEQ Coaching Principal interviews with staff Appraisal Monitoring professional development Access to outside facilitators Self-assessment/peer assessment re inquiry teaching capability		Learn from each other: Use ICT Observing each other Sharing ideas Schedule inquiry learning development days

	Establish succession planning for teachers			
Future Focus				
Staying at the forefront of teaching and learning – continuous improvement	Implement the revised teacher professional standards.	Practice that we seek from teachers comply with the new Professional Standards		

NAG 2: DOCUMENTATION AND SELF REVIEW				
5 Year Goal	Objective	Measure of Achievement	Date	Implementation
To ensure that the school acts reflectively and strategically.	Review the implementation of religious education at the school.	A decision will have been made by the end of 2010 whether religious education will be available for Year 5 & 6 students in 2011.		Data collected from teachers, parents, Years 5 & 6 students and religious education providers and a recommendation was made to the Board, based on the analysis of the data gathered, to continue religious education in 2009. A further survey in

				Term 4 2010. On-going.
	Final Board meeting of every term will be devoted entirely to strategic planning so that big ideas within the strategic plan could be discussed and developed.	The final Board meeting of each term will have been devoted to strategic planning.		Available. On-going.

NAG 2A: NATIONAL STANDARDS				
5 Year Goal	Objective	Measure of Achievement	Date	Implementation
National Standards operate seamlessly	To keep up to date on developments with National Standards and implement the requirements.	Parent satisfaction with communication and implementation of National Standards		

NAG 3: EMPLOYER RESPONSIBILITIES

5 Year Goal	Objective	Measure of Achievement	Date	Implementation

NAG 4: FINANCE AND PROPERTY

5 Year Goal	Objective	Measure of Achievement	Date	Implementation
Sustainable property and finance management	Shade areas for outside Rooms 7,8,9,10 to provide greater flexibility for the teaching and learning programmes; allowing students to work outside the classroom but in close proximity to the classroom.	A shade area will have been established outside Rooms 7 – 10 by the end of 2011.		Not yet achieved

	Revise and update the five year financial plan to manage prudently the finances of the school. Conduct a funding review to identify: (a) How funding can be increased and (b) If the current 'mix' of funding sources best meets the needs of the school's community.	An on-going five year financial plan will be reviewed and updated before the end of each school year.		Not yet achieved
	Provide up-graded sound system for hall.	By the end of 2010 a report will be presented to the BOT confirming the extent of the planned upgrade, with implementation by the end of 2011.		Not yet achieved
	Review the drainage needs of the school with the view to improving drainage. (5Year Property Plan)	This will be included the in revised 5YPP to be developed in 2011.		Not yet achieved
	Conduct an energy audit with the aims being to reduce usage and cost.	Recommendations from the energy audit will be presented to BOT meetings.		Audit completed. Decisions pending. On-going
	Develop a revised property plan and have as the priority the needs of teaching and learning once safety, health and maintenance needs have been met.	To be ready for the next 5YPP cycle, starting in mid 2011.		To be ready for 2011. On-going.
	To improve the availability of teaching and learning spaces for groups of students: (1) Re	Both buildings will provide modern learning		

	develop the boiler room into a teaching space once the boiler has been removed. (2) Re develop the dental clinic into a teaching space once the Waitemata District Health Board has constructed a concrete pad at the school for a mobile dental clinic.	environments for students by the start of the 2012 school year.		
--	--	---	--	--

NAG 5: HEALTH AND SAFETY				
5 Year Goal	Objective	Measure of Achievement	Date	Implementation
Provide an environment free of serious incidence and harm.	To improve the provision of shade areas.	An increase in the square metreage of shade areas.		Under action. On-going
	To have a compliance register: a) a list of registers b) a review of the insurance policies.	To have a compliance register.		

NAG 6: LEGAL LEGISLATION

5 Year Goal	Objective	Measure of Achievement	Date	Implementation